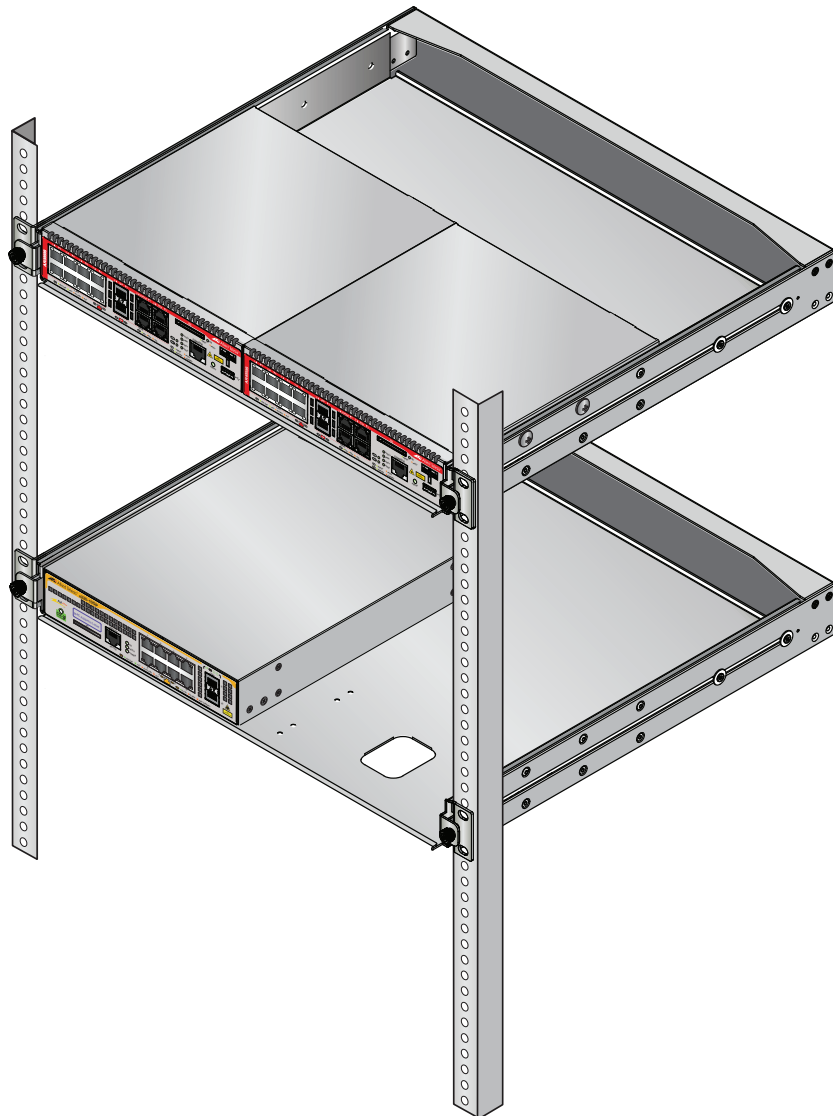




AT-x230-10GP
AT-AR3050S
AT-AR4050S



Rack Mount Installation Guide

C613-04072-00 REV A

Copyright © 2015 Allied Telesis, Inc.

All rights reserved. No part of this publication may be reproduced without prior written permission from Allied Telesis, Inc.

Allied Telesis and the Allied Telesis logo are trademarks of Allied Telesis, Incorporated. All other product names, company names, logos or other designations mentioned herein are trademarks or registered trademarks of their respective owners.

Allied Telesis, Inc. reserves the right to make changes in specifications and other information contained in this document without prior written notice. The information provided herein is subject to change without notice. In no event shall Allied Telesis, Inc. be liable for any incidental, special, indirect, or consequential damages whatsoever, including but not limited to lost profits, arising out of or related to this manual or the information contained herein, even if Allied Telesis, Inc. has been advised of, known, or should have known, the possibility of such damages.

Contents

Installation	7
Contents of AT-RKMT-J15 for the device	8
Installing a device in an equipment rack	9

Figures

Figure 1: Removing the rubber feet from the device	10
Figure 2: Installing the tray chassis in a 19-inch equipment rack	11
Figure 3: pulling out the tray	11
Figure 4: Aligning the faceplate with the edge of the tray.....	12
Figure 5: Aligning the faceplate 60mm off the edge of the tray	13
Figure 6: Returning the tray	13

Installation

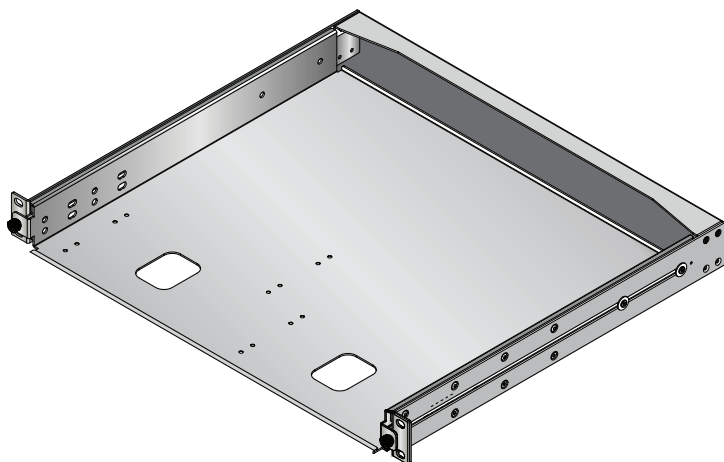
This chapter contains the following sections:

- “Contents of AT-RKMT-J15 for the device” on page 8
- “Installing a device in an equipment rack” on page 9

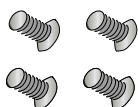
The procedures apply to AT-x230-10GP, AT-AR3050S and AT-AR4050S.

Contents of AT-RKMT-J15 for the device

The AT-RKMT-J15 rack mount kit can be purchased from your Allied Telesis dealer. The rack mount kit should contain the following items:



1 main unit (tray chassis)



4 M4x6mm truss head screws

If any item is missing, contact your Allied Telesis dealer for assistance.

Installing a device in an equipment rack

Before installing the device

Observe the following requirements before installing your device in an equipment rack:

- Verify that the rack is safely secured and will not tip over. Devices in a rack should be installed starting at the bottom, with the heavier devices near the bottom of the rack.
- Ensure that there is a power outlet for the switch that is close to the device and is easily accessible.
- Ensure that the position of the device in the rack will provide easy access to the device's ports. This will make it easier to connect and disconnect cables, as well as view the device's LEDs.
- Verify that the air flow around the device and through its vents on the side and rear will not be restricted, so that the device can maintain adequate cooling.
- Do not place objects on top of the device.
- Do not expose the device to moisture or water.
- Ensure that the rack is in a dust-free environment.
- Be sure to use dedicated power circuits or power conditioners to supply reliable electrical power to the network devices.

Note

This product is non-compatible with L-shaped connector power cable (AT-PWRCBL-J01L/J01R).

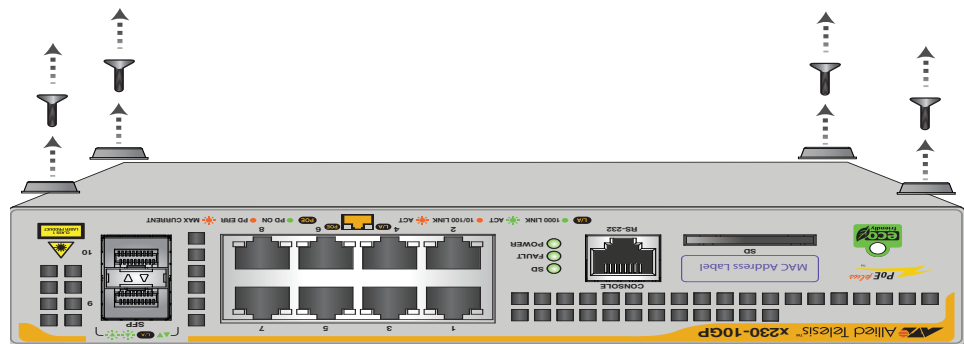
How to install the device

You will need an AT-RKMT-J15 rack mount kit to install one or two side-by-side devices in a 19-inch equipment rack. The rack mount kit can be purchased from your Allied Telesis dealer.

To install a device in the equipment rack, follow these steps:

1. If rubber feet are attached to the base of the device, place the unit upside down on a level, secure surface.
2. Remove the rubber feet with a screwdriver (Figure 1).

FIGURE 1. REMOVING THE RUBBER FEET FROM THE DEVICE

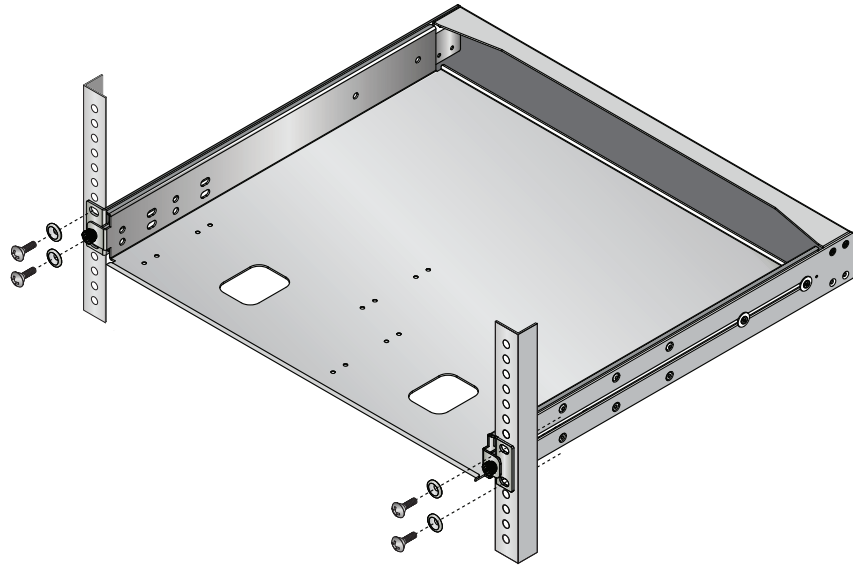


3. Turn the device back over.
4. Installing the tray chassis in a 19-inch equipment rack (Figure 2)
Mount the tray chassis to a desired location in a 19-inch equipment rack using four equipment rack screws. The rack screws are supplied with the equipment rack.

Note

At the time of installation, do not loosen the tray fixing screws.

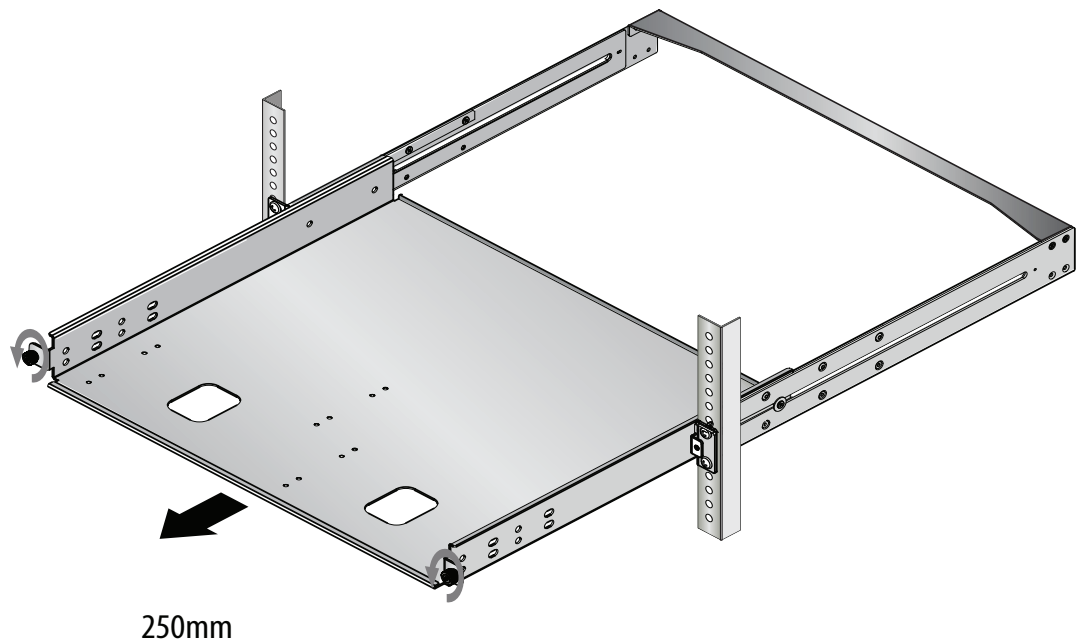
FIGURE 2. INSTALLING THE TRAY CHASSIS IN A 19-INCH EQUIPMENT RACK



5. Pulling out the tray (Figure 3)

To mount the device into the tray, you can loosen the tray fixing screws by screwing them on counterclockwise, and pull out the drawble tray to a maximum of 250mm from the tray chassis.

FIGURE 3. PULLING OUT THE TRAY

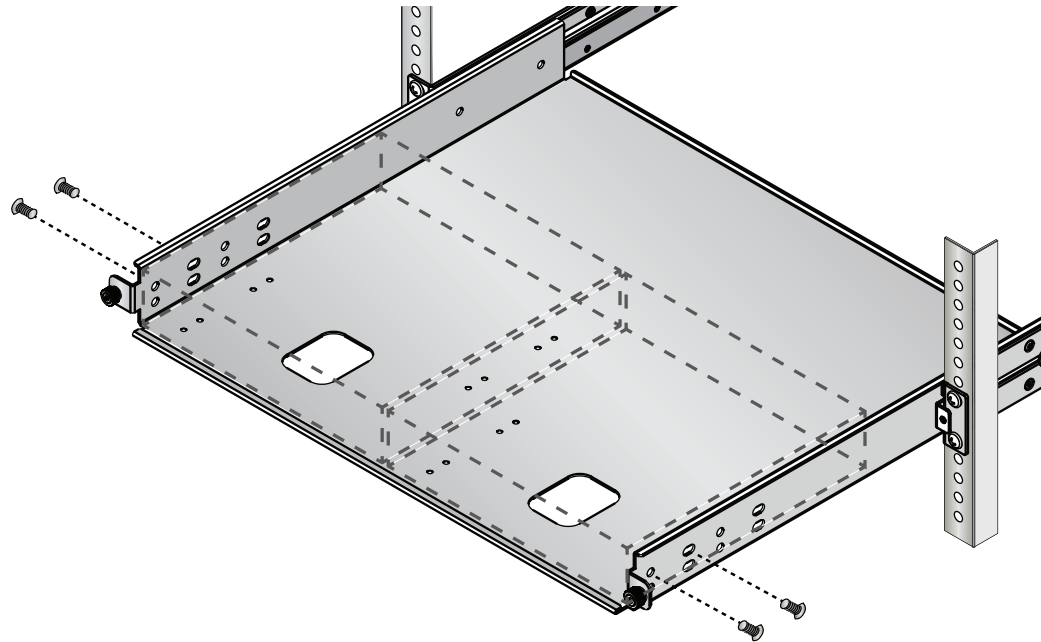


6. Aligning the devices

You can secure the devices into the tray with the truss head screws through the holes on the slide-rail weld. You can use two truss head screws per device. You can align up to two devices side by side in the tray.

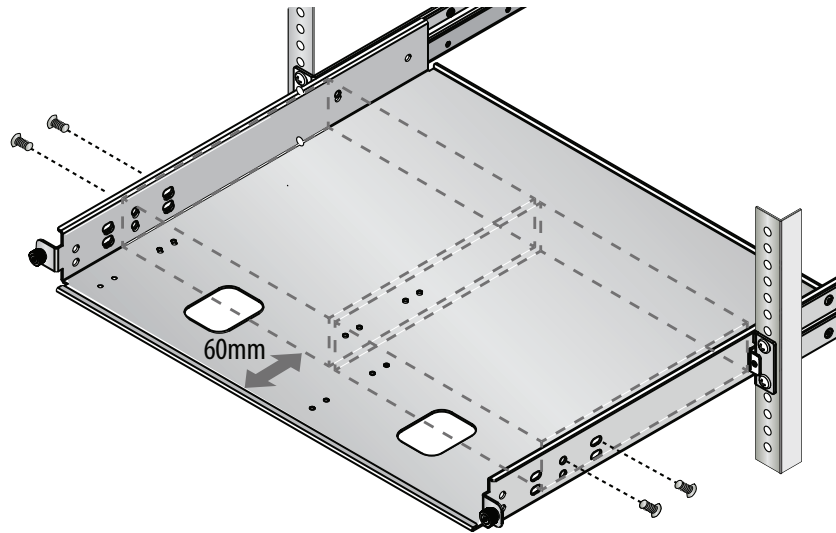
- To align the faceplate of the device with the edge of the tray, attach two truss head screws to one side of the device from the first and second holes of the slide-rail weld (Figure 4).

FIGURE 4. ALIGNING THE FACEPLATE WITH THE EDGE OF THE TRAY



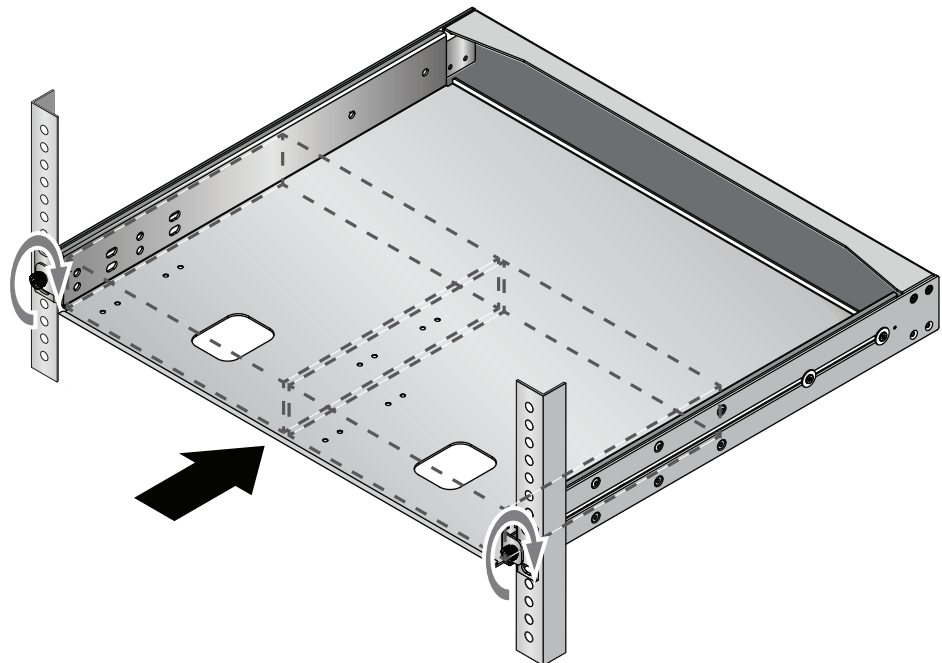
- To align the faceplate of the device 60mm back off the edge of the tray, attach two truss head screws to one side of the device from the third and fourth holes on the slide-rail weld (Figure 5).

FIGURE 5. ALIGNING THE FACEPLATE 60MM BACK OFF THE EDGE OF THE TRAY



7. Returning the tray to its original place (Figure 6)
After you have finished aligning the devices in the tray, slide the tray back to its original position, and tighten the tray fixing screws by screwing them on clockwise.

FIGURE 6. RETURNING THE TRAY



8. You can now cable the device as instructed in its Installation Guide.

