



# NexTalk

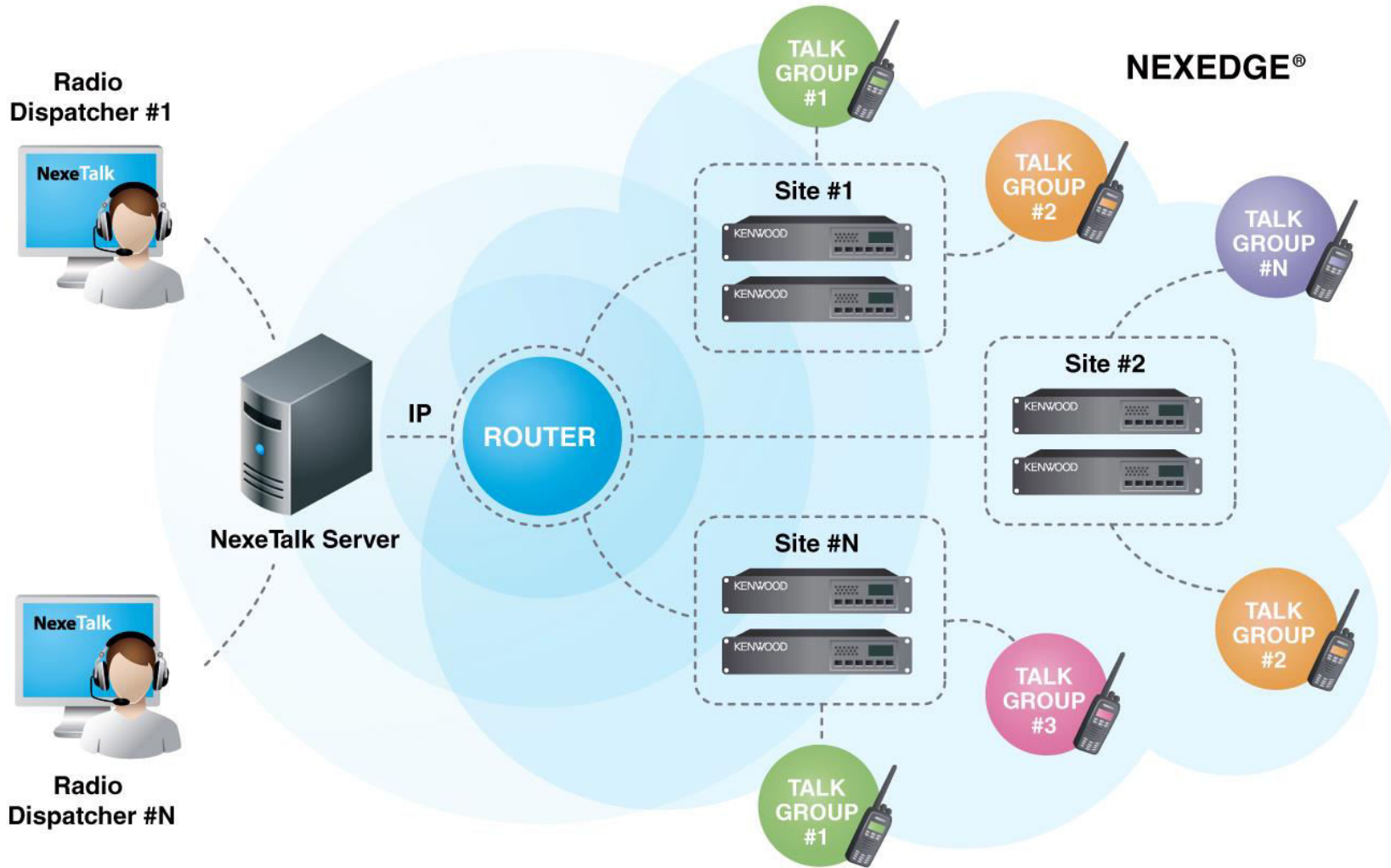
Dispatch Software

INTEGRATED CONTROL ROOM SOLUTION

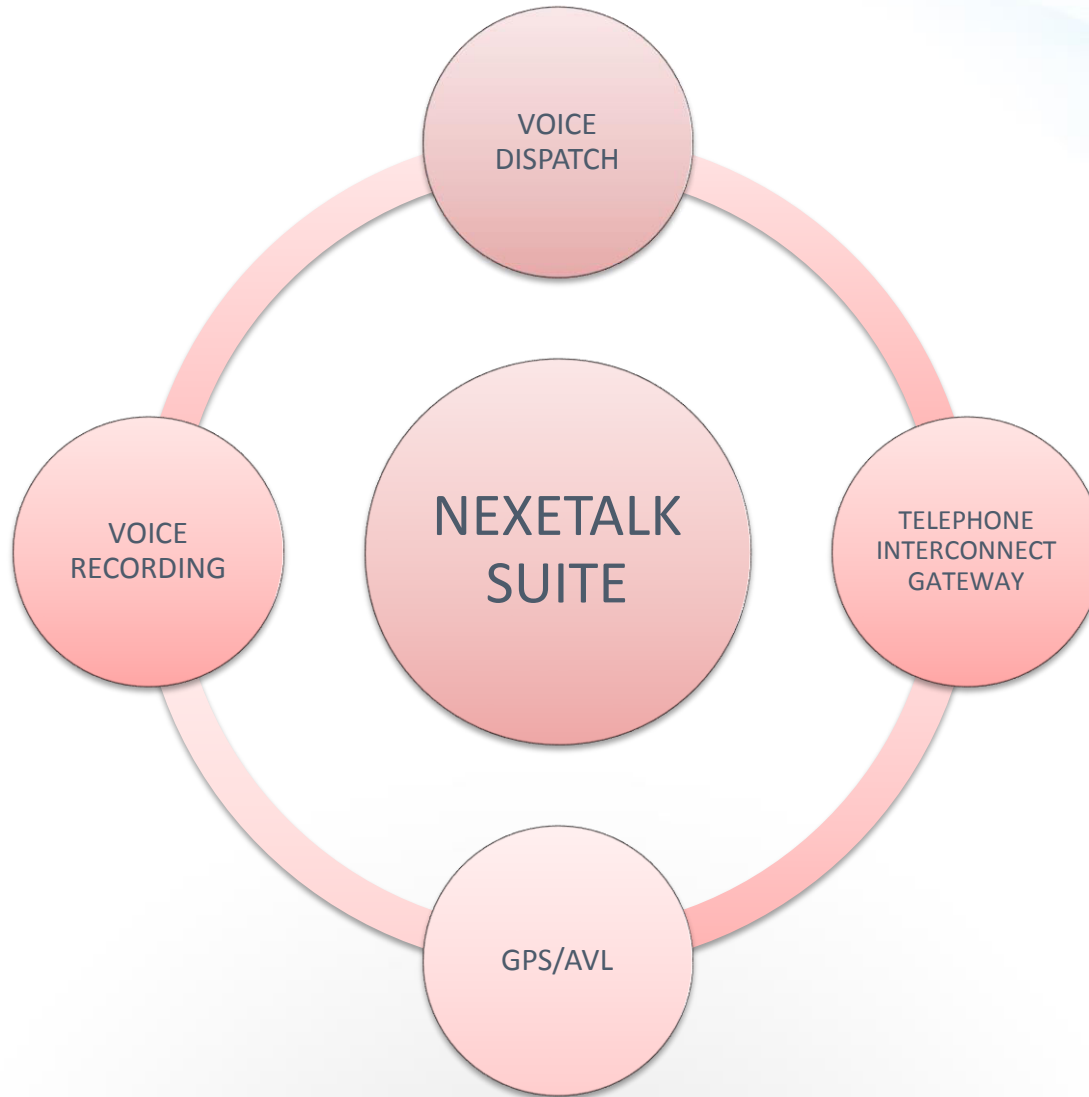
February 2014

- » NexeTalk Suite is an integrated Dispatching, Recording & Tracking solution designed for Kenwood NEXEDGE® trunked and conventional radio networks
- » NexeTalk supports networks of any size, starting from one-site systems and up to national multi-site systems
- » NexeTalk is truly IP-based:
  - > No AMBE dongles required
  - > No control stations needed
  - > Higher reliability
- » Touchscreen devices support
- » Custom software development





Radio  
Dispatcher #N





AMBE+2™ sound quality

Private calls

Group calls

Multiple group calls

Emergency calls

Text messaging / Message display

Muting options

Sound level control for each channel





Remote monitoring

Remote regrouping

USB/COM PTT devices support

Dispatcher roles / privileges

Configurable PTT box view

Radio status check (on/off)

Remote stun / revival

Default/Custom statuses support







Shortcuts

Select / Unselect channels

NexeTalk lone worker

Alert manager

Reports

Caller ID/Alias

Up to 65,000 IDs

Calls history







The screenshot displays the NexeTalk GPS interface. On the left, a vertical list of features is shown in white boxes with purple borders. The main area is a map with various vehicle locations marked by icons and labels. On the right, a sidebar contains three menu items: 'Map Options', 'Track Filter', and 'Point Info', each with a plus sign. The map shows a network of roads, including I-95, CR 726, CR 76A, CR 708, and CR 711. Several vehicle locations are marked: '470 Portable', '473 Portable', 'SIRV 7', '471 Portable', and '471 Truck'. The interface also includes a top-left navigation panel with directional arrows and a zoom in/out button, and a bottom status bar showing the server connection state and the user's name.

- Real-time GPS positioning
- OpenStreetMap, Bing maps
- Google Earth support
- Changeable GPS polling interval
- GPS history
- GPS playback
- GPS on PTT

Server connection state: Connected | Logged in as Eugene

© PHAETON | Ver

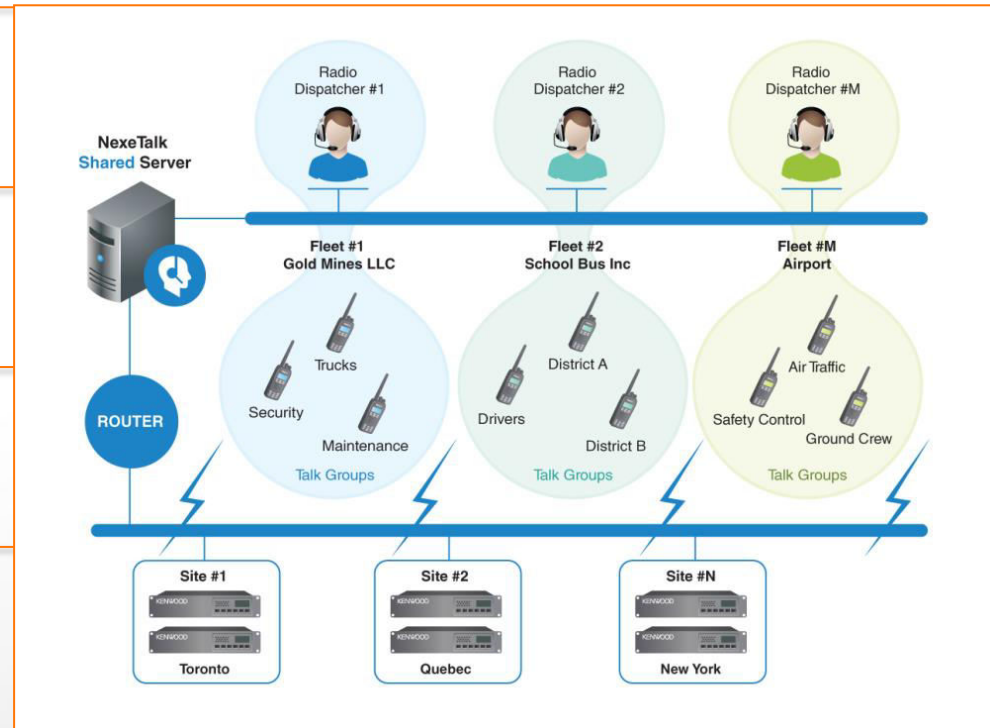
Allows SMR operators to lease their network infrastructure to customers

Multiple fleets sharing a radio system supported

Multiple talk groups and radio subscribers within a fleet

Privacy: One fleet's radios and data cannot be accessed by other fleets

Any number of dispatch consoles within each fleet



Support for trunked and conventional systems

Allows communications between radio and telephone subscribers

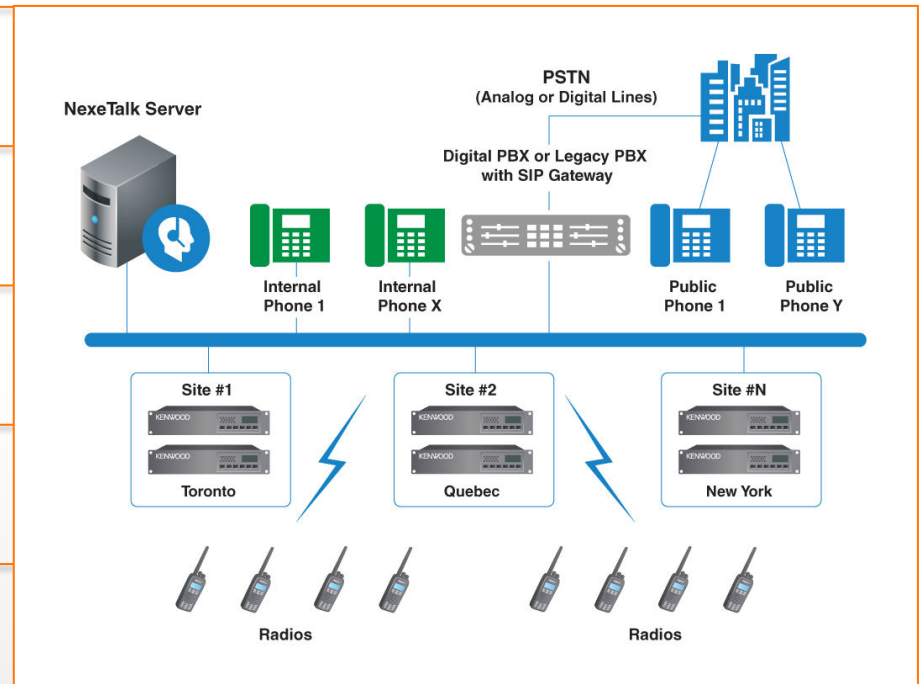
SIP 2.0 compatible PBXs

Radio-to-phone, phone-to-radio,  
phone-to-talk groups calls

Unlimited number of active  
simultaneous calls

Voice recording (optional)

Available as a standalone  
application



- » Platform
  - > 2.4 GHz Intel Core i3 CPU or better
  
- » Operating system
  - > Dispatch PC: Windows7 / Windows 8 32/64 bits
  - > Server PC: Windows7 / Windows 8 / Windows Server 2008/2012 32/64 bits
  
- » RAM
  - > 2 GB or more recommended
  
- » Hard Disc Space:
  - > 100 MB of free space required for full installation
  - > 300 GB or more recommended for voice recording
  
- » Database: MS SQL Server 2008/2012



# Thank You!

[www.NexeTalk.com](http://www.NexeTalk.com)

info@NexeTalk.com

