

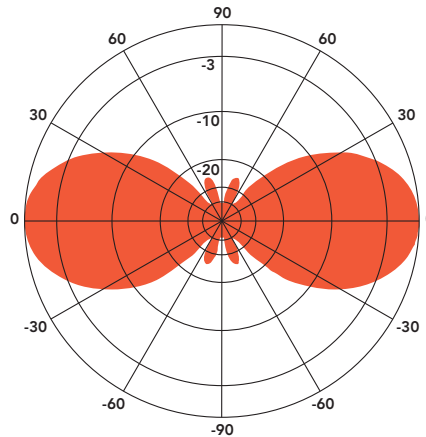
ANT400F2

FIBERGLASS COLLINEAR ANTENNA 2.5 dBd

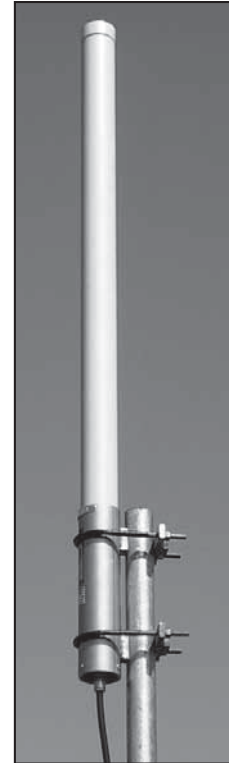
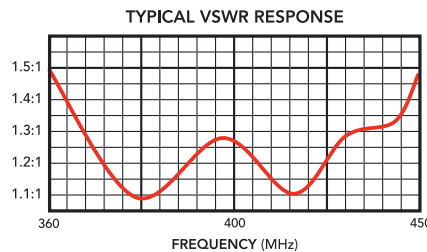
The Telewave ANT400F2 is an extremely rugged collinear antenna, with moderate gain and wide vertical beamwidth. This compact antenna produces 2.5 dBd gain, and is designed for operation in all environmental conditions. The antenna is constructed with brass and copper elements, with a path to ground potential for lightning impulse protection.

All junctions are fully soldered to prevent RF intermodulation, and each antenna is completely protected within a rugged, high-tech radome to ensure survivability in the worst environments. The "Cool Blue" radome provides maximum protection from corrosive gases, ultraviolet radiation, icing, salt spray, acid rain, and wind blown abrasives.

The ANT400F2 includes the ANTC485 dual clamp set for mounting to a 1.5" to 3" O.D. support pipe, and a 24" removable RG-213 N-Male jumper.



ANT400F2 - 410 MHz
Vertical Plane
Gain = 2.51 dBd



SPECIFICATIONS			
Frequency (continuous)	360-455 MHz	Dimensions (L x base diam.) in.	44 x 2.75
Gain	2.5 dBd	Tower weight (antenna + clamps)	9 lb.
Power rating (typ.)	500 watts	Shipping weight	11 lb.
Impedance	50 ohms	Wind rating / with 0.5" ice	200 / 150 MPH
VSWR	1.5:1 or less	Maximum exposed area	1.0 ft. ²
Pattern	Omnidirectional	Lateral thrust at 100 MPH	39 lb.
Vertical beamwidth	38°	Bending moment at top clamp	33 ft. lb.
Termination	Recessed N Female 7-16 DIN-F opt.	(100 MPH, 40 PSF flat plate equiv.)	