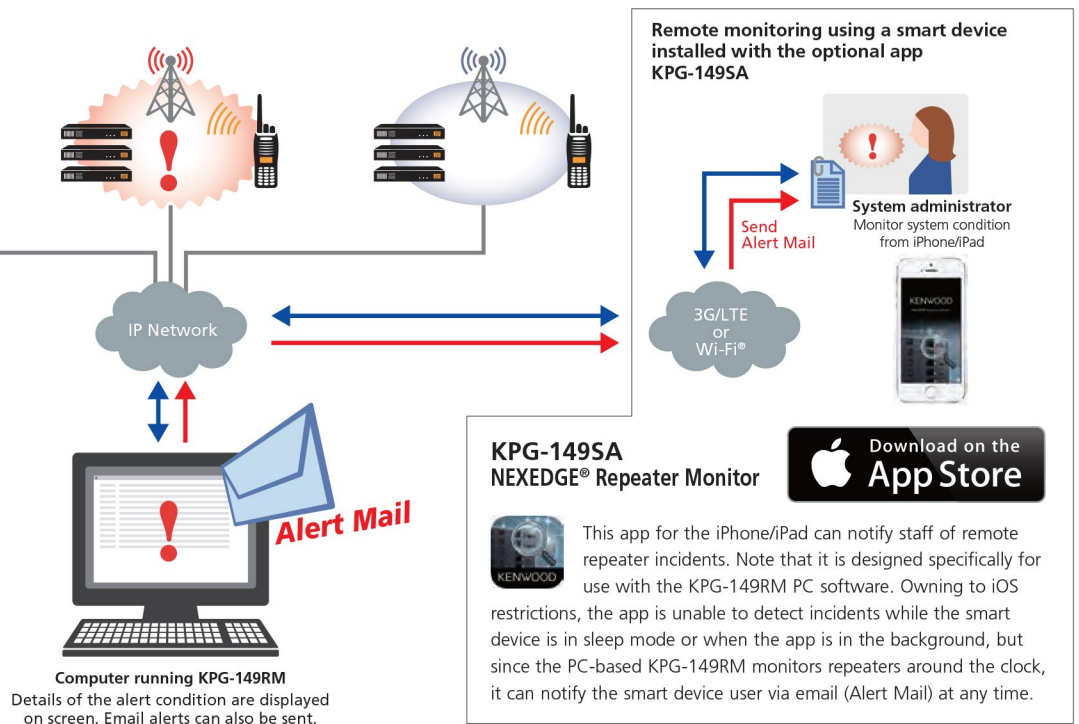


For NXR-700/800 & NXR-710/810

The KPG-149RM enables around-the-clock remote IP monitoring of all repeaters on an NXDN® single-site or multi-site trunked network and on NXDN® conventional IP networks. This software can alert supervisors and technical personnel of systemic problems or failures of any repeater at any site. Also the KPG-149RM can be set to sound a PC alarm and send multiple emails or SMS text messages upon receiving an alert. All events are recorded in a log file. Remote IP repeater monitoring helps prevent serious problems occurring and thus ensure that mission-critical communications remain uninterrupted.

The KPG-149RM provides remote monitor capabilities so technical personnel can view the diagnostic parameters of all repeaters on an NXDN® single-site or multi-site trunked network. It also allows remote monitoring of NXDN® conventional sites with an IP connection installed.

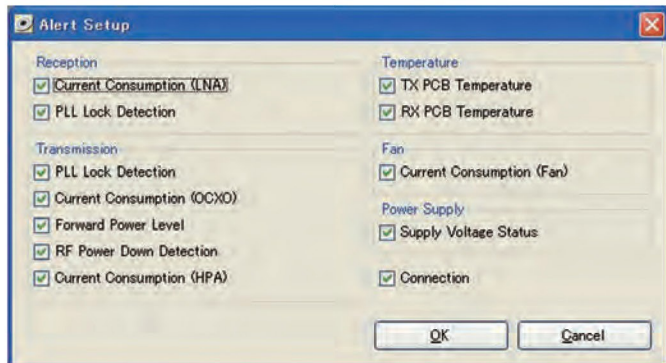


Main Features

- **Monitored Parameters**
Technical personnel have access to detailed information on a repeater's status thanks to individual monitoring of power, temperature, fan, etc. The monitoring interval is adjustable.
- **Log Output**
Upon launch, the software creates a log file (CSV format) in a designated folder. A new log file is created for each session.
- **Alarm**
Optionally, when an alert condition is detected a PC alarm tone will sound. A customized alarm can be set up by specifying a user-supplied WAV audio file.
- **Email & SMS Text Alerts**
Provided with access to an SMTP mail server, the software can alert one or more personnel by email or text message.
- **Simple User Interface**
The main screen offers an intuitive tabbed organization for easy switching between Monitor and Log displays. Separate configuration screens facilitate the registering of new repeaters, email recipients, etc.

Only items that are checked are subject to monitoring (at the specified interval). Current operating status is clearly displayed with either a green (normal) or red (alert) icon.

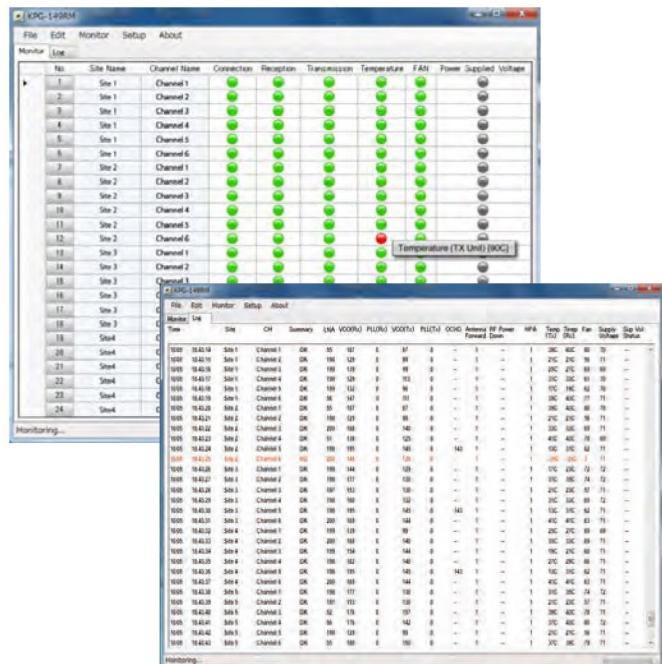
- Reception: Current Consumption (LNA) and PLL Lock Detection
- Transmission: PLL Lock Detection, Current Consumption (OCXO), Forward Power Level, RF Power Down Detection, and Current Consumption (HPA)
- Temperature: TX PCB Temperature and RX PCB Temperature
- Fan: Current Consumption
- Supplied Power Voltage: Supply Voltage Status
- Connection



	Items	NXR-700/800/900	NXR-710/810
Reception	Current Consumption (LNA)	x ^{*1}	N/A
	PLL Lock Detection	x	x
Transmission	PLL Lock Detection	x	x
	Current Consumption (OCXO)	x	N/A
	Forward Power Level	x	N/A
	Power Down Detection	N/A	x
	Current Consumption (HPA)	x	N/A
TEMP	TX PCB Temperature	x	x
	RX PCB Temperature	x	N/A
FAN	Current Consumption (Fan)	x ^{*2}	N/A
Supplied Power Voltage	Supply Voltage Status	N/A	x
Connect		x	x

*1: Function is not available on the NXR-900.
*2: K type hardware only

Monitoring software display and log file



The monitoring software displays a green (normal) or red (alert) icon to show the operating condition. A gray icon indicates that no information can currently be retrieved. These details are recorded in a log file.

PC Software / Hardware Requirements

	KPG-149RM
Operating system	Microsoft® Windows® XP (32-bit) / Windows Vista® / Windows® 7 / Windows® 8
CPU	Intel® Pentium® III 1GHz or higher
RAM	256 MB or more
HDD free space	40MB or more (not including storage of log files)
LAN	10 Base-T or higher
Display	XGA (1024 x 768), more than 256 colors

Specifications are subject to change without notice due to advancements in technology.

Microsoft®, Windows® and Windows Vista® are registered trademarks of Microsoft Corporation in the United States and other countries. Apple, iPad, iPhone, and iTunes are trademarks of Apple Inc. registered in the U.S. and other countries. App Store is a service mark of Apple Inc. Intel® and Pentium® are trademarks of Intel Corporation in the U.S. and/or other countries. Wi-Fi® is a registered trademark of the Wi-Fi Alliance. NXDN® is a registered trademark of JVC KENWOOD Corporation and Icom Inc. NEXEDGE® is a registered trademark of JVC KENWOOD Corporation. All other trademarks and registered trademarks are property of their respective owners.

Note: iTunes software may be used to reproduce materials. It is licensed for materials you are authorized or legally permitted to reproduce. Any other use of the iTunes Products, such as for illegal copying of music, may constitute a copyright infringement.

IMPORTANT! Please read the "Radio User Safety" information in the KPG-149RM package prior to using the KPG-149RM Repeater Monitor Software.

JVC KENWOOD Corporation

Professional Systems Business Group
Communications Equipment Division

1-16-2 Hakusan, Midori-ku, Yokohama-shi, Kanagawa, 226-8525 Japan
www.jvckenwood.co.jp/en
http://nexedge.kenwood.com

Radiowave Communication Ltd.

Arusha Head Office Dar es Salaam Sales Centre
Kwa Nglulel Area, Ali Hassan Mwinyi,
Behind Gapco Fuel Station Junction to Ruhinde Street
sales@radiowave.co.tz | www.radiowave.co.tz

