

## Indoor/Outdoor Mounts and Accessories

Honeywell's Performance Series HQA mounts and accessories provide a range of installation options for the Honeywell Performance Series HQA cameras, including junction box, wall, pole, and corner mounts.

The mounts provide easy cable routing with no exposed wiring, and the cameras can be installed, adjusted, and tested without repositioning the housing. All of the mounts and accessories are suitable for indoor or outdoor use.

The junction boxes, and pole mount are constructed of die-cast aluminum. The corner mount adapter is made of SECC steel. The HEJB junction box is made of die-cast aluminum and SECC steel. All of the mounts and accessories are powder coated to match the finish of the camera.

## Market Opportunities

Honeywell's Performance Series HQA mounts and accessories provide excellent value at an attractive price, featuring simple, clean lines, rugged construction, and a wide range of mounting options.



HQA-BB1  
Junction Box



HQA-WK  
Wall Mount



HQA-BB2  
Junction Box

HQA-WK2  
Wall Mount

HQA-BB3  
Junction Box



HQA-PM  
Pole Mount



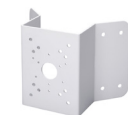
HBS2-BB  
Junction Box



HQA-PM2  
Pole Mount



HEJB  
Junction Box



HB34S2-CM  
Corner Mount

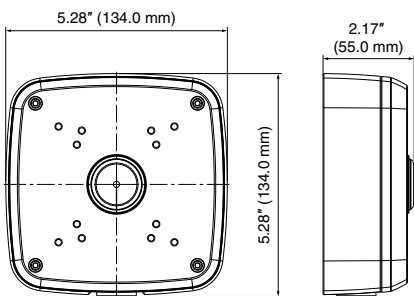
## FEATURES AND BENEFITS

[illegible]

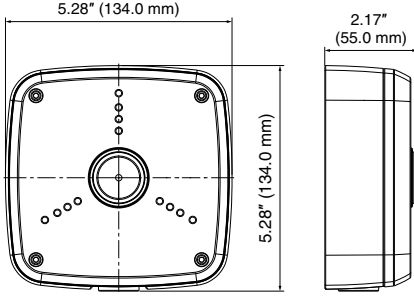
# Indoor/Outdoor Mounts and Accessories

## DIMENSIONS

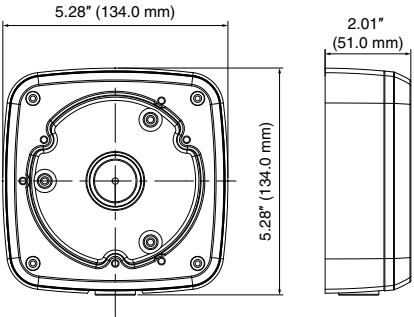
HQA-BB1



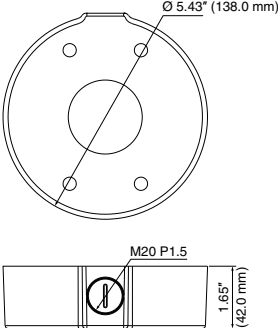
HBS2-BB



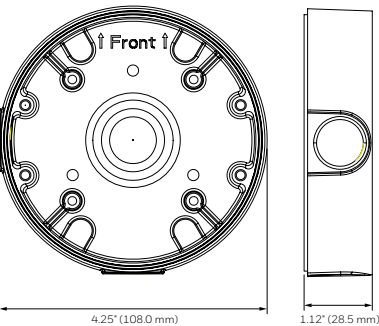
HQA-BB2



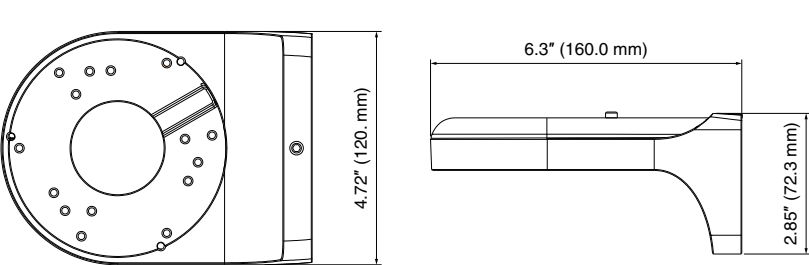
HEJB



HQA-BB3



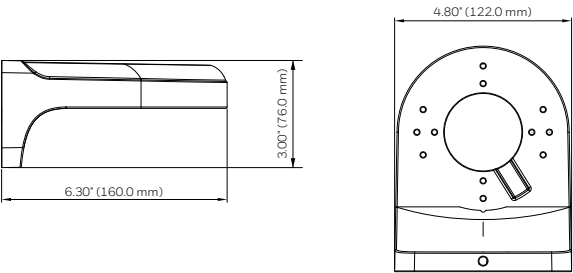
HQA-WK



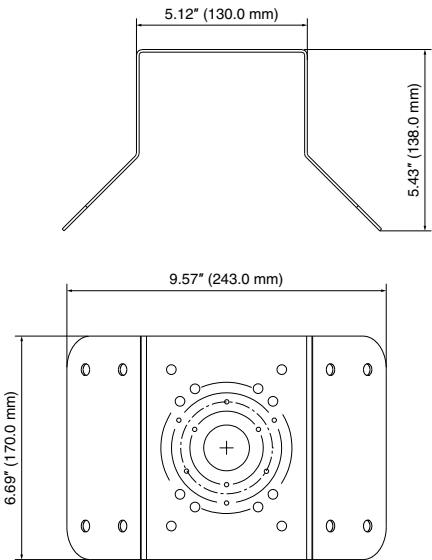
# Indoor/Outdoor Mounts and Accessories

## DIMENSIONS

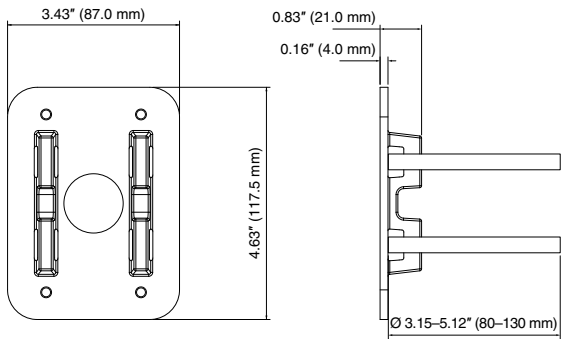
HQA-WK2



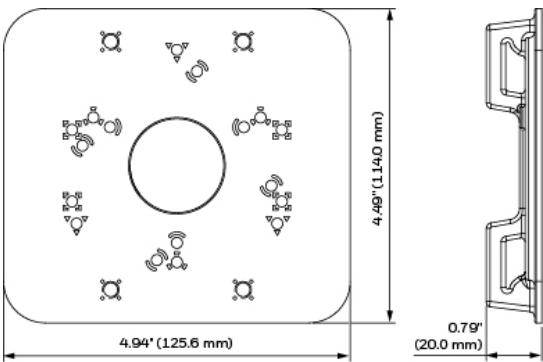
HB34S2-CM



HQA-PM



HQA-PM2



# Indoor/Outdoor Mounts and Accessories

## SPECIFICATIONS

MECHANICAL			
MODEL NO.	UNIT WEIGHT	CONSTRUCTION	DIMENSIONS
HQA-BB1	1.1 lb (0.5 kg)	Die-cast aluminum	5.28 x 5.28 x 2.17 in. (134.0 x 134.0 x 55.0 mm)
HQA-BB2	1.32 lb (0.6 kg)	Die-cast aluminum	5.28 x 5.28 x 2.01 in. (134.0 x 134.0 x 51.0 mm)
HQA-BB3	1.08 lb (0.49 kg)	Die-cast aluminum	6.30 x 4.80 x 3.00 in. (160.0 x 122.0 x 76.0 mm)
HBS2-BB	1.1 lb (0.5 kg)	Die-cast aluminum	5.28 x 5.28 x 2.17 in. (134.0 x 134.0 x 55.0 mm)
HEJB	0.84 lb (0.38 kg)	Die-cast aluminum and SECC steel	ø 5.43 x 1.65 in. (ø 138.0 x 42.0 mm)
HQA-PM	0.44 lb (0.2 kg)	Die-cast aluminum	4.63 x 3.43 x 0.83 in. (117.5 x 87.0 x 21.0 mm)
HQA-PM2	0.6 lb (0.27 kg)	Die-cast aluminum	4.94 x 4.49 x 0.79 in. (125.6 x 114.0 x 20.0 mm)
HB34S2-CM	3.75 lb (1.7 kg)	SECC steel	9.57 x 6.69 x 5.43 in. (243.0 x 170.0 x 138.0 mm)
HQA-WK	2.2 lb (1.0 kg)	Die-cast aluminum and ABS	4.72 x 2.85 x 6.3 in. (120.0 x 72.3 x 160.0 mm)
HQA-WK2	0.35 lb (0.16 kg)	Die-cast aluminum	ø 4.25 x 1.12 in. (ø 108.0 x 28.5 mm)

\* A compatible junction box is required when installing to either the HQA-PM pole mount or the HB34S2-CM corner mount.

MOUNTS	COMPATIBLE HONEYWELL CAMERAS
HQA-BB1	HB74HD2, HD30HD1, HD30HD2, HB74HD4
HQA-BB2	HD31HD2, HD73HD1, HD74HD2, HD231HD2, HD274HD2, HD72HD4, HD274HD4
HQA-BB3	HD30HD4
HBS2-BB	HB74HD1, HB75HD1, HB76HD2, HB276HD2, HD29HD1, HD31HD2, HD231HD2, HB276HD4
HEJB	HB74HD1, HD31HD2, HD231HD2

MOUNTS	COMPATIBLE HONEYWELL CAMERAS
HQA-PM	All HQA cameras (with a compatible junction box)
HQA-PM2	All HQA cameras (with a compatible junction box)
HB34S2-CM	All HQA cameras (with a compatible junction box)
HQA-WK	HD29HD1, HD31HD2, HD73HD1, HD74HD2, HD231HD2, HD274HD2, HD274HD4, HD72HD4
HQA-WK2	HD30HD1, HD30HD2

## ORDERING

HQA-BB1	Junction Box, Off-White	HQA-PM	Pole Mount Adapter, Off-White
HQA-BB2	Junction Box, Off-White	HQA-PM2	Pole Mount Adapter, Off-White
HQA-BB3	Junction Box, Off-White	HB34S2-CM	Corner Mount Adapter, Off-White
HBS2-BB	Junction Box, Off-White	HQA-WK	Wall Mount, Off-White
HEJB	Junction Box, Off-White	HQA-WK2	Wall Mount, Off-White

### For more information

[www.honeywell.com/security](http://www.honeywell.com/security)

### Honeywell Security and Fire

2700 Blankenbaker Pkwy, Suite 150

Louisville, KY 40299

1.800.323.4576

[www.honeywell.com](http://www.honeywell.com)

Honeywell reserves the right, without notification, to make changes in product design or specifications.

L/HQAD/D | 04/17

© 2017 Honeywell International Inc.

**Honeywell**